

Sáez

TLS 60 14 - K

TLS 60 14 - E

max. Ausladung:	60,00 m
Spitzenlast:	1.320 kg
max. Traglast:	6.000 kg
max. Hakenhöhe:	56,40 m

Lastkurven / Load diagrams

60 m	15	16	17,7	20	24	27	30	33	35	38	40	43	45	48	50	52	55	60	m	
	6000	6000	6000	5154	4116	3554	3112	2755	2553	2292	2141	1941	1824	1667	1573	1486	1369	1200	Kg	
SL	15	16	18	18,7	24	27	30	33	35	38	40	43	45	48	50	52	55	60	m	
	6000	6000	6000	6000	4431	3832	3360	2979	2764	2485	2324	2111	1985	1818	1718	1625	1500	1320	Kg	

55 m	15	16	19,9	21	24	27	30	33	35	38	40	43	45	48	50	52	55	m	
	6000	6000	6000	5634	4791	4149	3643	3235	3004	2705	2532	2304	2170	1990	1883	1784	1650	Kg	
SL	15	16	18	21,2	24	27	30	33	35	38	40	43	45	48	50	52	55	m	
	6000	6000	6000	6000	5187	4497	3955	3517	3269	2948	2762	2518	2373	2180	2065	1959	1815	Kg	

50 m	15	21	21,8	24	27	30	33	35	38	40	43	45	48	50	m	
	6000	6000	6000	5371	4659	4100	3648	3392	3061	2869	2617	2468	2269	2150	Kg	
SL	15	18	19	21	23,4	27	30	33	35	38	40	43	45	48	m	
	6000	6000	6000	6000	6000	5071	4467	3980	3704	3347	3141	2868	2708	2493	Kg	

45 m	15	18	20	21	23,1	27	30	33	35	37	40	43	45	m	
	6000	6000	6000	6000	6000	4972	4379	3900	3629	3388	3075	2808	2650	Kg	
SL	15	16	20	21	24,8	27	30	33	35	38	40	43	45	m	
	6000	6000	6000	6000	6000	5426	4785	4267	3973	3594	3375	3085	2915	Kg	

40 m	15	18	20	22	23,5	27	30	33	36	38	40	m	
	6000	6000	6000	6000	6000	5085	4480	3991	3588	3357	3150	Kg	
SL	15	16	20	21	25,3	27	30	33	35	38	40	m	
	6000	6000	6000	6000	6000	5563	4907	4377	4077	3689	3465	Kg	

35 m	15	18	19	21	23,4	27	30	35	m	
	6000	6000	6000	6000	6000	5066	4463	3700	Kg	
SL	15	16	19	21	25,3	27	30	35	m	
	6000	6000	6000	6000	6000	5553	4898	4070	Kg	

30 m	10	15	20	23,6	30	m	
	6000	6000	6000	6000	4500	Kg	
SL	15	16	20	25,5	30	m	
	6000	6000	6000	6000	4950	Kg	

25 m	10	15	20	23,2	25	m	
	6000	6000	6000	6000	5500	Kg	
SL	15	16	20	21	25	m	
	6000	6000	6000	6000	6000	Kg	

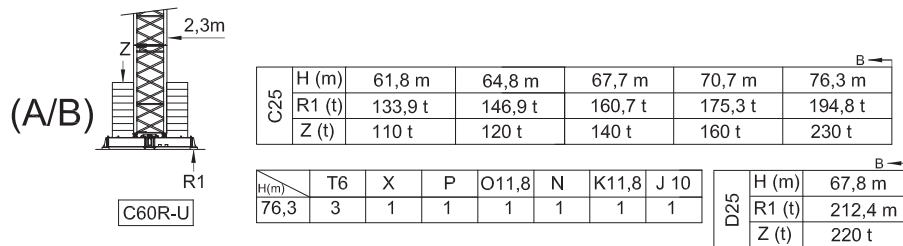
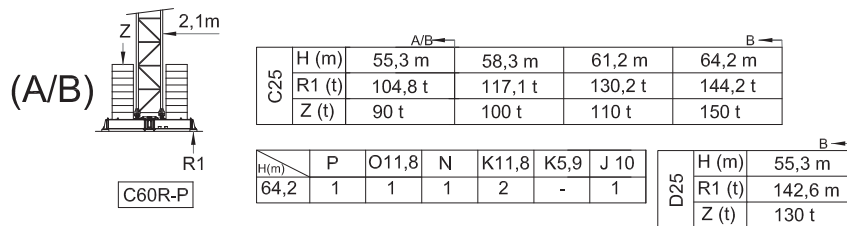
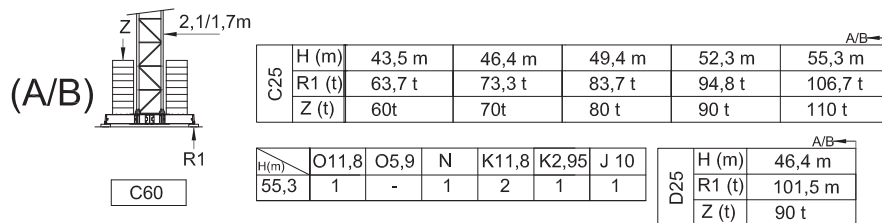
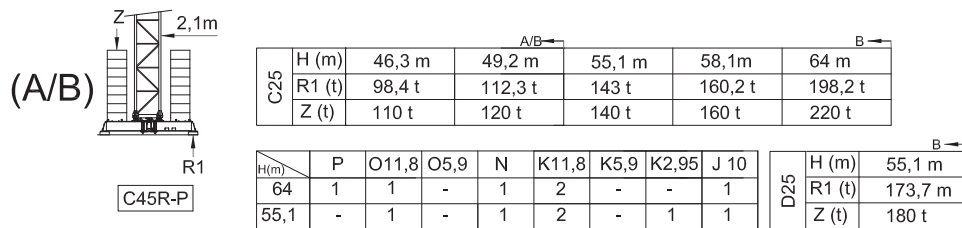
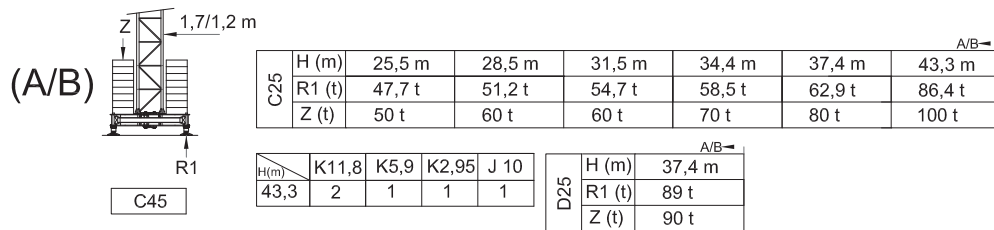
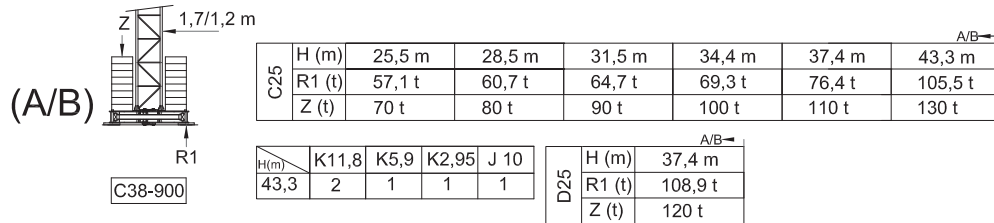
20 m	10	15	17	18	20	m	
	6000	6000	6000	6000	6000	Kg	
SL	15	16	18	21	20	m	
	6000	6000	6000	6000	6000	Kg	

(i) Consultarnos - Consultateci - Consult us - Nous consulter - Auf anfrage - советоватьсья

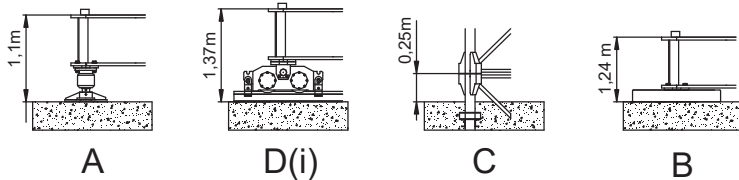
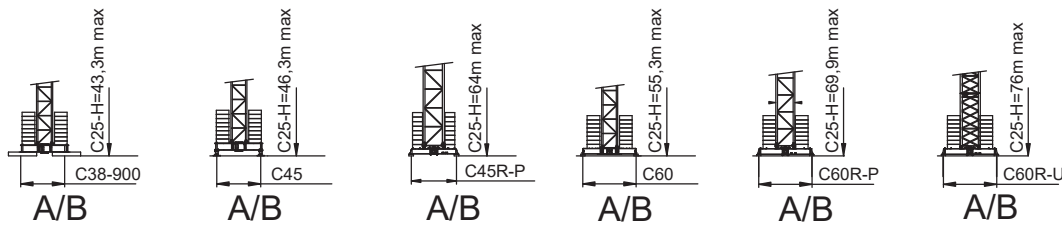
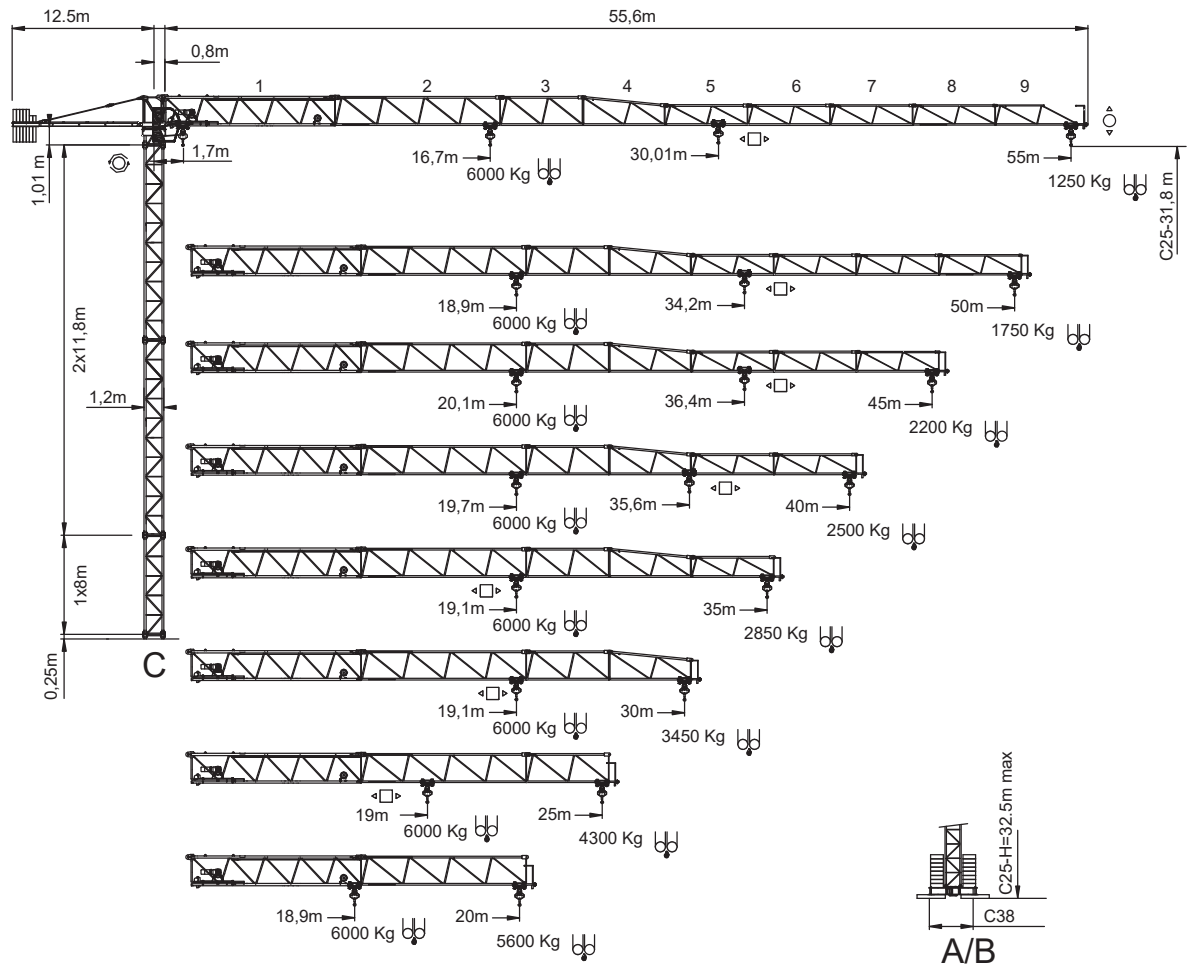
SL-SUPERLIFT Otras velocidades y características de funcionamiento – Variant speeds and service conditions – Abweichende Geschwindigkeiten und Betriebsbedingungen – Vitesses et conditions de fonctionnement différentes – Differenti velocità e condizioni di funzionamento – Нестандартные скорости и условия эксплуатации

Angaben gemäß Hersteller. Angaben und Informationen ohne Gewähr. Irrtum und Änderung vorbehalten. Haftung ausgeschlossen. September 2022.

FEM 1005-C25-D25/EN 14439 - Grundballastblöcke / Base ballast block



Angaben gemäß Hersteller. Angaben und Informationen ohne Gewähr. Irrtum und Änderung vorbehalten. Haftung ausgeschlossen. September 2022.



SAEZ EKO Power Control Remote Assistance Zoning Anti-Collision Lifting Access


DIN/FEM





EN 14439-FEM 1005- C25

REV. 0.0 _ July 2018


Angaben gemäß Hersteller. Angaben und Informationen ohne Gewähr. Irrtum und Änderung vorbehalten. Haftung ausgeschlossen. September 2022.





Lastkurven / Load diagrams - SL-Superlift

55 m 


15	16,7	18	21	24	27	30	33	35	38	40	43	45	48	50	52	55	m	
6000	6000	5475	4524	3831	3303	2888	2553	2363	2117	1975	1788	1677	1530	1441	1360	1250	Kg	
15	17,7	18	21	24	27	30	33	35	38	40	43	45	48	50	52	55	m	
6000	6000	5886	4871	4131	3567	3124	2766	2563	2301	2149	1949	1831	1674	1579	1493	1375	Kg	


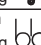
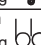
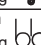
SL

50 m 


15	18,9	21	24	27	30	33	35	38	40	43	45	48	50	m	
6000	6000	5300	4502	3894	3416	3029	2811	2528	2364	2149	2022	1852	1750	Kg	
15	18	20,2	21	24	27	30	33	35	38	40	43	45	48	m	
6000	6000	6000	5740	4882	4229	3715	3300	3065	2761	2585	2353	2217	2034	Kg	


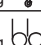
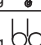
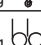
SL

45 m 


15	18	20,1	21	24	27	30	33	35	37	40	43	45	m	
6000	6000	6000	5701	4849	4200	3689	3276	3043	2836	2566	2336	2200	Kg	
15	16	20	21,5	24	27	30	33	35	38	40	43	45	m	
6000	6000	6000	6000	5277	4577	4026	3581	3329	3004	2815	2566	2420	Kg	





SL

40 m 


15	19,7	20	22	24	27	30	33	36	38	40	m	
6000	6000	5909	5264	4735	4099	3599	3195	2862	2671	2500	Kg	
15	16	21,2	22	24	27	30	33	35	38	40	m	
6000	6000	6000	5737	5165	4478	3938	3501	3254	2935	2750	Kg	





SL

35 m 


15	18	19,1	21	24	27	30	35	m	
6000	6000	6000	5367	4560	3945	3462	2850	Kg	
15	16	20,6	21	24	27	30	35	m	
6000	6000	6000	5861	4987	4321	3797	3135	Kg	

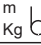



SL

30 m 


10	15	19,1	25	30	m	
6000	6000	6000	4323	3450	Kg	
15	16	20,6	21	30	m	
6000	6000	6000	5857	3795	Kg	

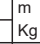
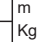
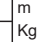
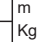
SL

25 m 

10	15	19	20	25	m	
6000	6000	6000	5648	4300	Kg	
15	16	20,5	21	25	m	
6000	6000	6000	5842	4730	Kg	

SL

20 m 

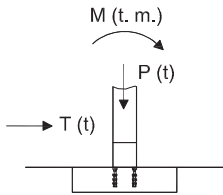
10	15	17	18,9	20	m	
6000	6000	6000	6000	5600	Kg	
15	16	18	21	20	m	
6000	6000	6000	6000	6000	Kg	

SL

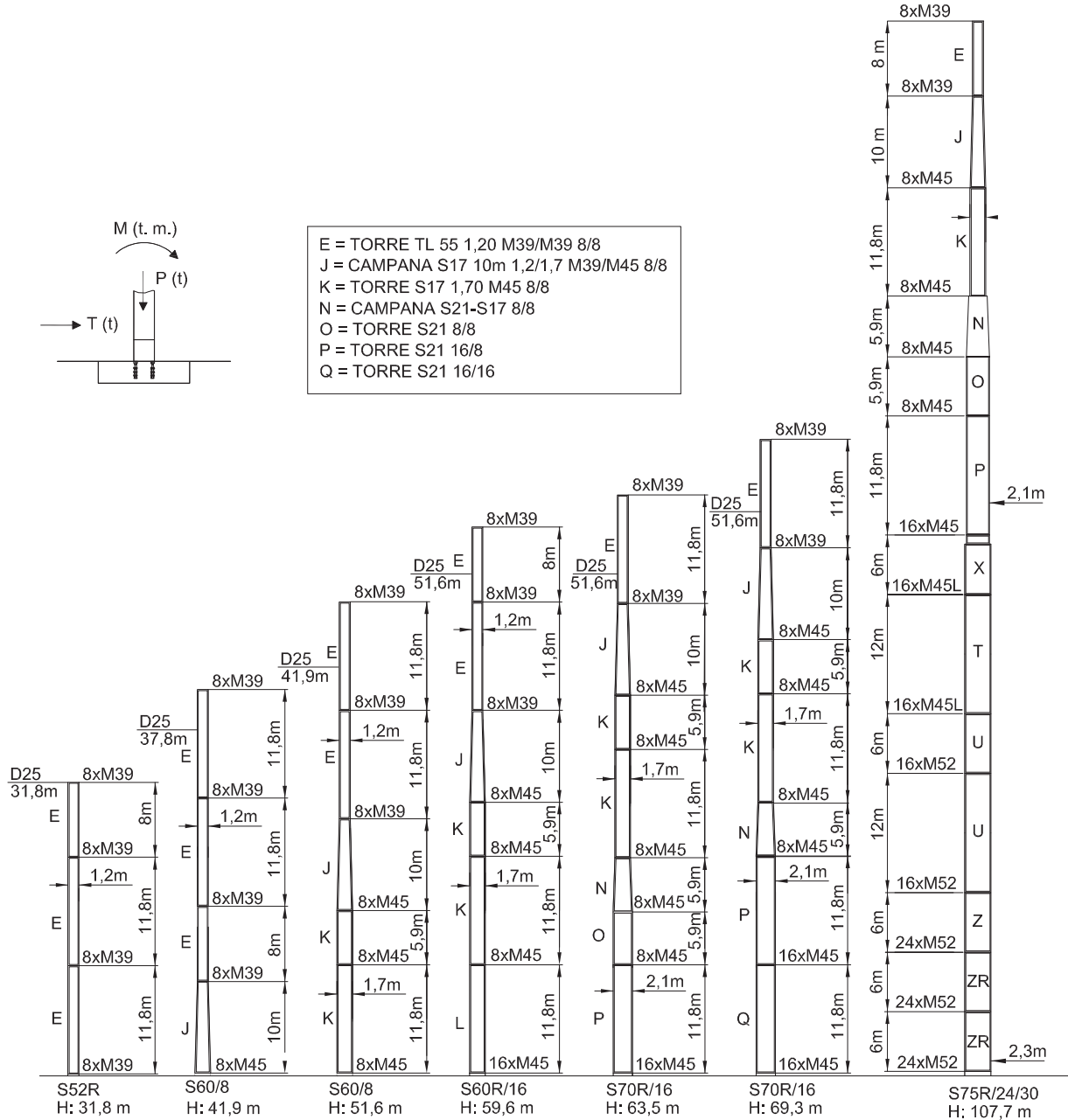
(i) Consultarnos - Consultateci - Consult us - Nous consulter - Auf anfrage

SL-SUPERLIFT Otras velocidades y características de funcionamiento – Variant speeds and service conditions – Abweichende Geschwindigkeiten und Betriebsbedingungen – Vitesses et conditions de fonctionnement différentes – Differenti velocità e condizioni di funzionamento – Нестандартные скорости и условия эксплуатации

Angaben gemäß Hersteller. Angaben und Informationen ohne Gewähr. Irrtum und Änderung vorbehalten. Haftung ausgeschlossen. September 2022.

FEM 1005-C25-D25/EN 14439 - Maste Eckdrücke / Masts Reactions


E = TORRE TL 55 1,20 M39/M39 8/8
 J = CAMPANA S17 10m 1,2/1,7 M39/M45 8/8
 K = TORRE S17 1,70 M45 8/8
 N = CAMPANA S21-S17 8/8
 O = TORRE S21 8/8
 P = TORRE S21 16/8
 Q = TORRE S21 16/16



C25	H (m)	23,8	27,8	31,8	41,9	51,6	59,6	63,5	69,3
	M (T·m)	171,5	194,7	221,4	292,6	371,8	499	560	673,7
	T (t)	4,3	4,7	5,1	6,2	7,3	12,5	13,6	14,7
	P (t)	41,1	42,8	44,4	49,2	53,8	53,2	56,3	58,5

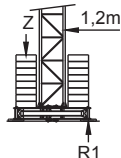
D25	H (m)	31,8	37,8	41,9	51,9	56,1	59,6
	M (T·m)	22,4	270,5	324	477,9	610,7	671,7
	T (t)	5,1	10,9	11,8	14	16,1	16,8
	P (t)	44,4	43,4	45	49,2	53,9	54,9

(i) Consultarnos - Consultated - Consult us - Nous consulter - Auf anfrage -
 Другие высоты подъема и наращивание крана по запросу

Angaben gemäß Hersteller. Angaben und Informationen ohne Gewähr. Irrtum und Änderung vorbehalten. Haftung ausgeschlossen. September 2022.

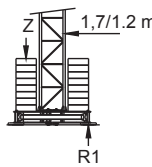
FEM 1005-C25/EN 14439 - Grundballastblöcke / Base ballast block

OBENDREHER



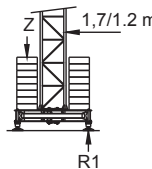
C25	H (m)	20.5 m	24.5 m	28.5 m	32.5 m
	R1 (t)	44.2 t	47.9 t	53.2 t	60 t
	Z (t)	60 t	60 t	70 t	80 t

C38



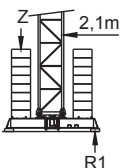
C25	H (m)	24.7 m	28.7 m	32.7 m	36.3 m	39.3 m	43.3 m
	R1 (t)	46.7 t	51.5 t	56.6 t	63.7 t	80.5 t	99.3 t
	Z (t)	60 t	60 t	70 t	80 t	100 t	110 t

C38-900



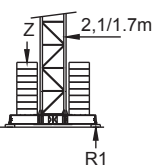
C25	H (m)	22.3 m	26.3 m	30.3 m	36.3 m	39.3 m	42.3 m	46.3 m
	R1 (t)	37.9 t	42.3t	44.4 t	50.5 t	62 t	77 t	93.8 t
	Z (t)	50 t	50 t	50 t	60 t	70 t	80 t	100 t

C45



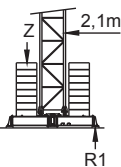
C25	H (m)	33.7 m	36.7 m	39.6 m	42.6 m	52.6 m	56.6 m	60.6m	64.6 m
	R1 (t)	50.6 t	57 t	67.5t	78.5 t	121.4 t	141 t	163.2 t	187.3 t
	Z (t)	60 t	60 t	70 t	80 t	120 t	130 t	150 t	210 t

C45R-P



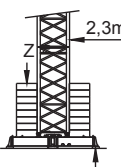
C25	H (m)	25 m	27.9 m	30.9 m	33.8 m	43.8 m	47.8 m	51.8 m	55.8 m
	R1 (t)	30.8 t	33.2 t	35.7 t	38.2 t	60.8 t	72.7 t	85.7 t	100.1 t
	Z (t)	40 t	40 t	40 t	40t	50t	60 t	70 t	100 t

C60



C25	H (m)	39.8 m	42.8 m	45.7 m	48.7 m	58.7 m	62.7 m	66.7 m	70.7 m
	R1 (t)	49.9 t	58.1 t	66.8t	76.1 t	111.2 t	127.3 t	144.8 t	164 t
	Z (t)	40 t	40 t	50t	60 t	90 t	110 t	130 t	170 t

C60R-P



C25	H (m)	46 m	48.9 m	51.9 m	54.9 m	64.9 m	68.9 m	72.9 m	76.9 m
	R1 (t)	70.3 t	79.5 t	89.3 t	99.7 t	138.2 t	155.6 t	174.5 t	194.8 t
	Z (t)	50 t	60 t	60 t	70 t	24 t	140 t	160 t	210 t

C60R-U

Angaben gemäß Hersteller. Angaben und Informationen ohne Gewähr. Irrtum und Änderung vorbehalten. Haftung ausgeschlossen. September 2022.

Gegengewichtsblöcke / Counterweight blocks

	60 m			55 m			50 m			45 m			40 m		
	A	B	C	A	B	C	A	B	C	A	B	C	A	B	C
	5	2	-	5	2	-	5	2	-	5	1	-	4	2	-
	16750 Kg			16750 Kg			16750 Kg			15250 Kg			14000 Kg		

	35 m			30 m			25 m			20 m		
	A	B	C	A	B	C	A	B	C	A	B	C
	4	1	-	3	2	-	3	1	-	2	2	-
	12500 Kg			11250 Kg			9750 Kg			8500 Kg		

Antriebe / Mechanisms

33 Hp (24 Kw) INV
400V / 50HZ
HBG Iebus 190m S/R Ø10mm

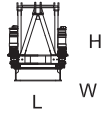
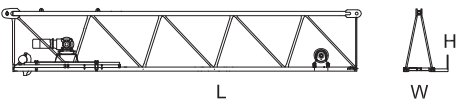
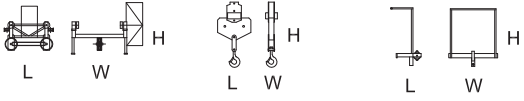
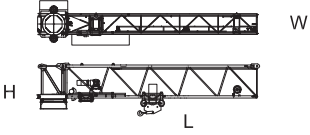

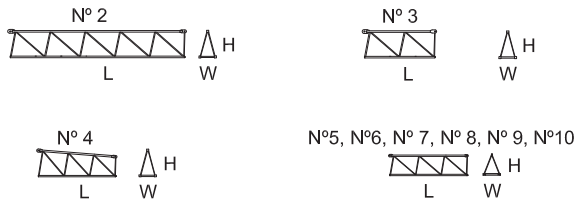
		m/min								
			0-8	0-35	0-56	0-100	0-4	0-17.5	0-28	0-50
380 m		Kg	3000	3000	2200	1000	6000	6000	4400	2000
		Kw	24	24	24	24	24	24	24	24
		m/min	11 / 37 / 75				11 / 37 / 75			
		Kw	3				3			
*		r.p.m	0,3	0,6	0,9	0,3	0,6	0,9		
		Kw	2 x 5,5				2 x 5,5			
		m/min	20				20			
		Kw	2 x 2,2				2 x 2,2			

33Hp (24Kw) - INV

		400V 50Hz I _{max} = 72A Fuse= 80A	TOTAL POWER 42 KVA	GENERATOR 75 KVA	100m	150m	200m
					2005/88/CEE	2006/95/CEE	*480V 60Hz I _{max} = 60A Fuse = 70A
2000/14/CEE	2006/95						

- * Opcional / Optional / Opzionale
- Elevación / Hoisting / Heben / Levage / Sollevamento
- Distribución / Trolleying / Katzfahren / Distribution / Dìtribuzione
- Orientación / Slewing / Schwenken / Orientation / Rotazione
- Traslacion / Travelling / Schienenfahren / Translation / Traslazione
- Cable / Rope / Seil / Câble / Fune

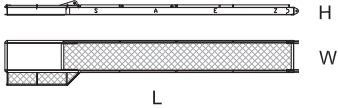

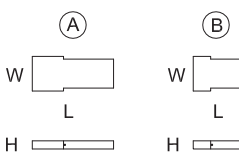
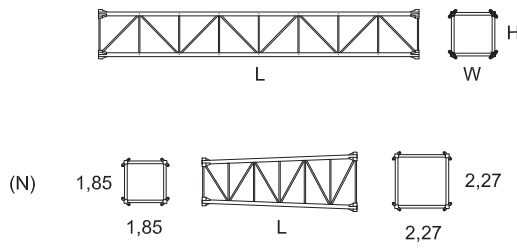
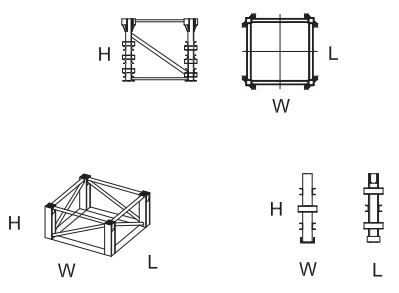
Abmessungen und Transport / Dimensions and transport

	L(m)	W(m)	H(m)	Peso(Kg)
Unidad de rotacion / Complete slewing unit / Drehbühne / Orientation / Rotazione / Оголовок башни 	1,86	1,86	3	3925
Balcon giro corto / short slewing balcony Balcon giro largo / long slewing balcony				117 110
Pluma tramo primero / Jib heel section / Ausleger-Anlenkstück / Pied de fleche / Settore articolato di braccio / Корневая секция стрелы 	10,7	1,25	2,3	3567
Equipo de Elevacion / Hoist winch Balcon pluma 1 / Jib 1 balcony				690 117
Gancho, Carro y Puntera / Hook, Trolley and jib head / Lasthaken - Laufkatze-Cabeça de Lança / Crochet - Chariot-Pointe de fleche / Gancio - Carrello e Punta freccia / Крюк и грузовая тележка 	1,55 0,8 0,8	1,35 0,15 1,2	1,5 1,5 1,4	291 242 100
Unidad de rotacion + pluma 1 / Complete slewing unit+ jib heel section / Drehbühne / Orientation / Rotazione 	11,96	2,3	3	8142
Cabina y soporte / Cabin and platform / Kabine und wartungs / Cabine et support / Cabina e supporto / Кабина с основой 	3,3	1,3	2,35	1135
Elemento intermedio de pluma / Intermediate jib section / Ausleger-Zwischenstück / Elément interm. de fleche / Spezzone di bracci / Промежуточная секция стрелы 				2 3 4 5 6 7 8 9 10
	10,3 5,22 5,22 5,2 5,17 5,17 5,14 5,14 5,14	1,11 1,11 1,11 1,11 1,11 1,11 1,11 1,11 1,11	1,83 1,81 1,8/1,3 1,3 1,3 1,3 1,28 1,28 1,28	1375 575 555 535 415 370 295 250 255

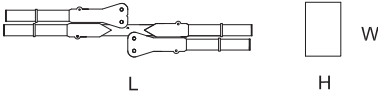
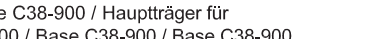
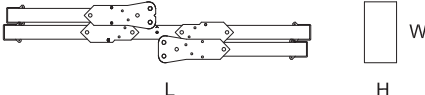
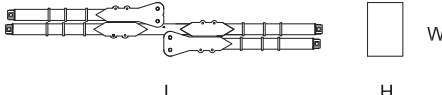
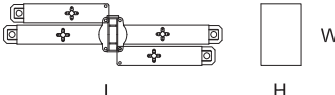
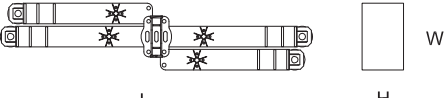
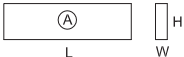

Angaben gemäß Hersteller. Angaben und Informationen ohne Gewähr. Irrtum und Änderung vorbehalten. Haftung ausgeschlossen. September 2022.

SÁEZ TLS 60 14 - K

130 mt

	L(m)	W(m)	H(m)	Peso(Kg)	
Contrapluma con tirantes / Counter-jib and tie-bars / Gegenausleger / Contre-fleche / Controbraccio / Консоль противовеса 	11,94	1,8	0,6	3352	
Barandillas / Protection 				240	
Bloque de contrapeso / Counterweight blocks / Gegengewichtsblöcke / Bloc de contrepoids / Blocco di contrappeso / Плита противовеса 	A B	3,5 1,83	1,25 1,25	0,29 0,29	2750 1500
Elemento de torre / Tower section / Turmstück / Élément de mât / Elemento di torre / Башенные секции 	J K K K L O O O P N X T T U U Z ZR	10 11,8 5,9 3 11,8 11,8 5,9 3 11,8 5,9 6 6 12 6 12 6 6	1,85 1,85 1,85 1,85 1,85 2,27 2,27 2,27 2,27 2,27 2,29 2,29 2,29 2,31 2,31 2,61 2,31	1,38 1,85 1,85 1,85 1,85 2,27 2,27 2,27 2,27 2,27 2,29 2,29 2,29 2,34 2,34 2,34 2,34	3520 4620 2505 1500 5325 4980 2680 1580 5880 2850 4830 4780 9000 6200 11180 7825 7925
Elemento de empotre / Foundation anchor / Fundamentanker / Pieds de scellement / El anegare / Анкерные крепления 	S60/8 S60/R16 S70/8 S70R/16 S75R16/20 S75R16/22 S75R16/26 S75R24/26 S75R24/30 Dima	1,85 1,85 2,27 2,27 0,35 0,5 0,5 0,5 0,8	1,85 1,85 2,27 2,27 0,35 0,5 0,5 0,5 0,8	1,6 1,6 1,6 1,6 1,6 2 2,4 2,4 3	956 1108 1122 1274 1200 1400 2100 3400 3600 1650

Angaben gemäß Hersteller. Angaben und Informationen ohne Gewähr. Irrtum und Änderung vorbehalten. Haftung ausgeschlossen. September 2022.

	L(m)	W(m)	H(m)	Peso(Kg)
<p>Base C38 / base C38/ Hauptträger für fundamentkreuz C38 / Base C38 / Base C38</p> 	5,75	1,47	0,77	3670
<p>Base C38-900 / base C38-900 / Hauptträger für fundamentkreuz C38-900 / Base C38-900 / Base C38-900</p> 	5,75	1,47	0,97	5550
<p>Base Cruciforme C45-700 / Crossbase C45-700 / Fundamentkreuz C45-700 / Châsis C45-700 / Carro base C45-700</p> 	6,7	1,3	0,77	6190
<p>Base C60-900 / base C60-900 / Hauptträger für fundamentkreuz C60-900 / Base C60-900 / Base C60-900</p> 	8,66	1,47	0,96	8625
<p>Base C45R-P / base C45R-P / Hauptträger für fundamentkreuz C45R-P / Base C45R-P / Base C45R-P</p> 	6,9	1,94	1,14	9000
<p>Base C60R-P/U / base C60R-P/U / Hauptträger für fundamentkreuz C60R-P/U / Base C60R-P/U / Base C60R-P/U</p> 	9,01	1,94	1,35	13500
<p>Bloque lastre de base / Base ballast block / Grundballastblöcke / Bloc de lest de base / Blocco di zavorra alla base</p> 	4,5 5,8	0,51 0,4	0,9 1,5	5000 8000
<p>Bloque apoyo de base / Base support block / Grundballastblöcke / Bloc de appui de base / Blocco di appoggio alla base</p> 	2	0,5	2	5000